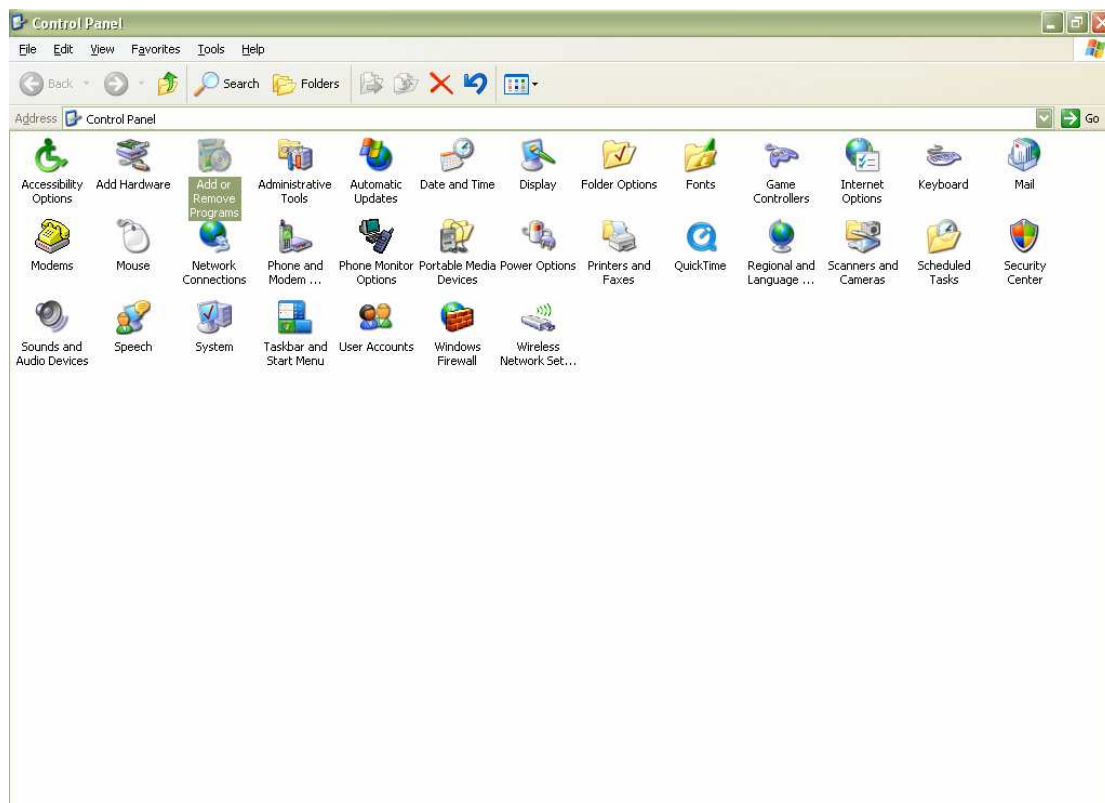


## Instructions for Upgrade to Aequos Engage Version 2.0.0.0

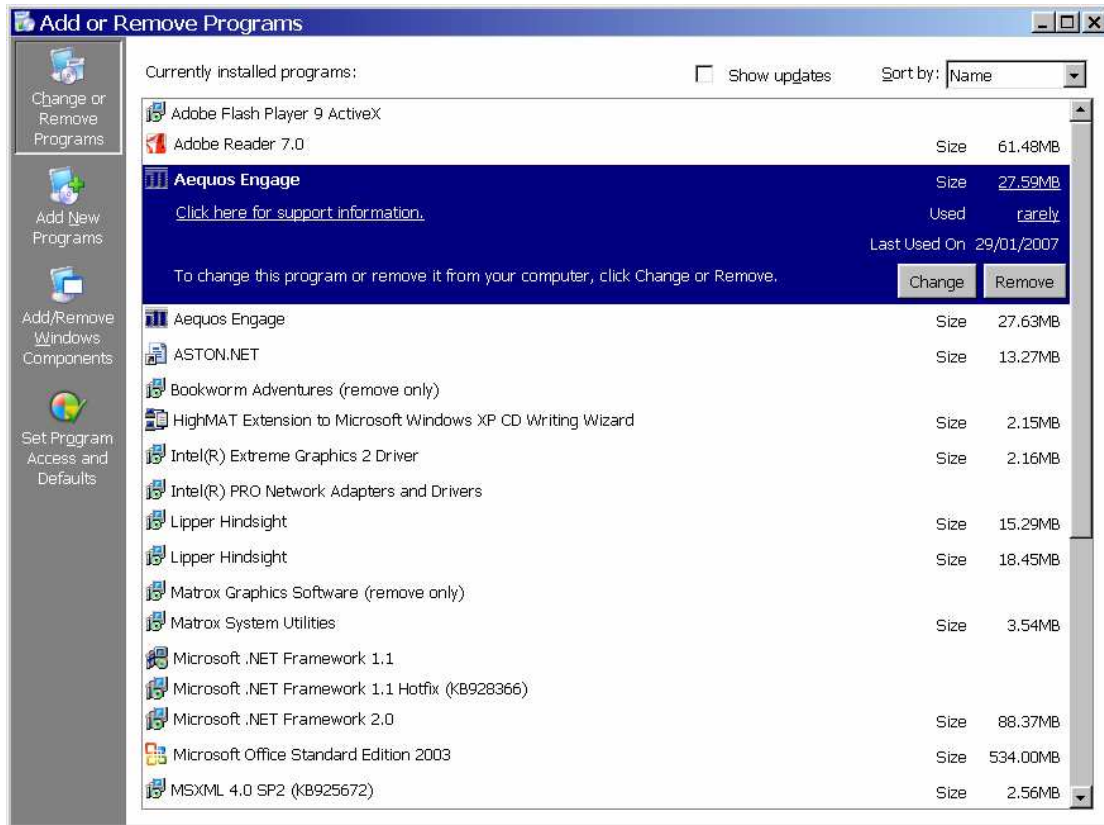
Before installing the Aequos Engage version 2.0.0.0 update you MUST uninstall the existing version from your laptop or PC.

This is the only time you will be required to go through this process.

To uninstall the existing version open the Control Panel from the Start menu on your PC and select the 'Add or Remove Programs' icon.

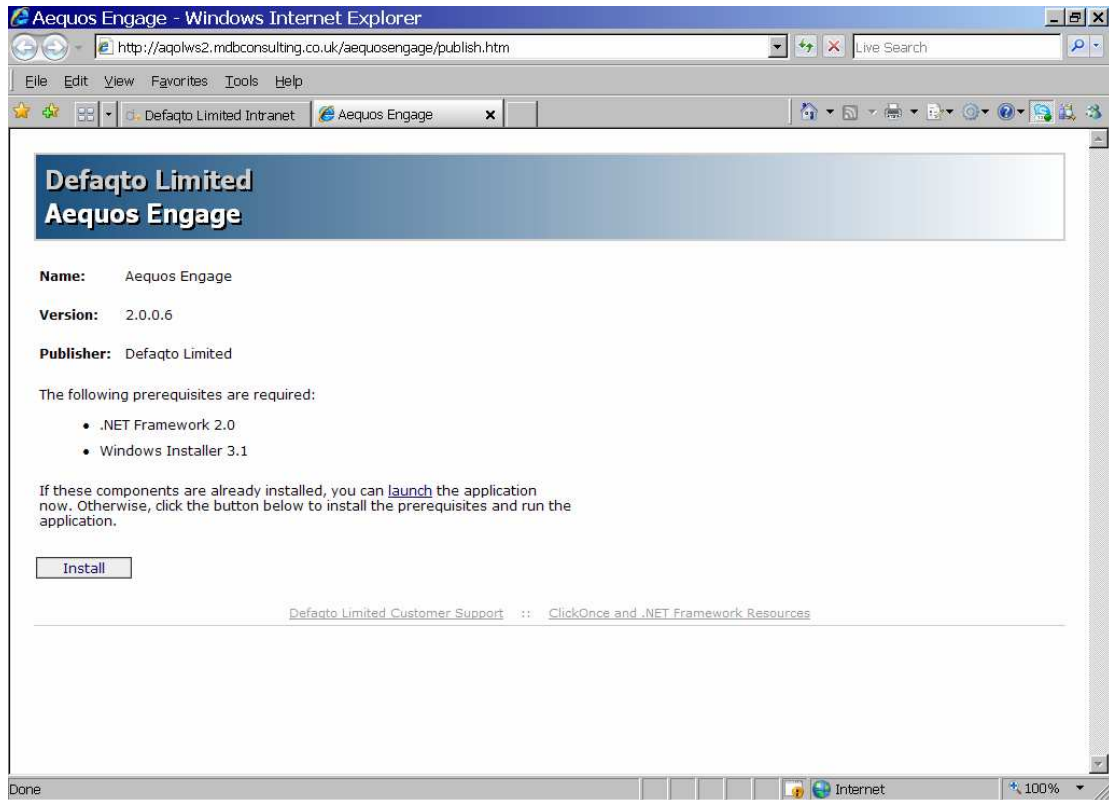


Within the populated list of programs, select Aequos Engage and click on the Remove button as demonstrated below:

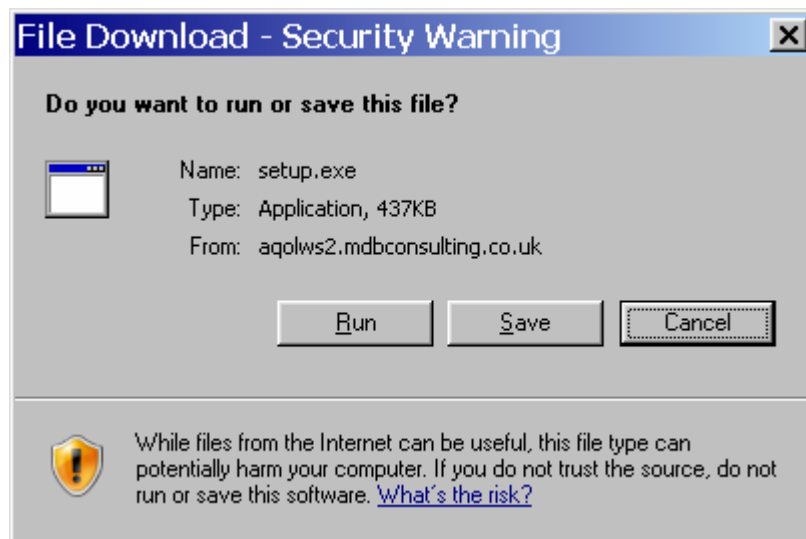


Having uninstalled your current version you can now click on the update link ([www.aequosengage.com/publish.htm](http://www.aequosengage.com/publish.htm)) where you will be directed to the update page.

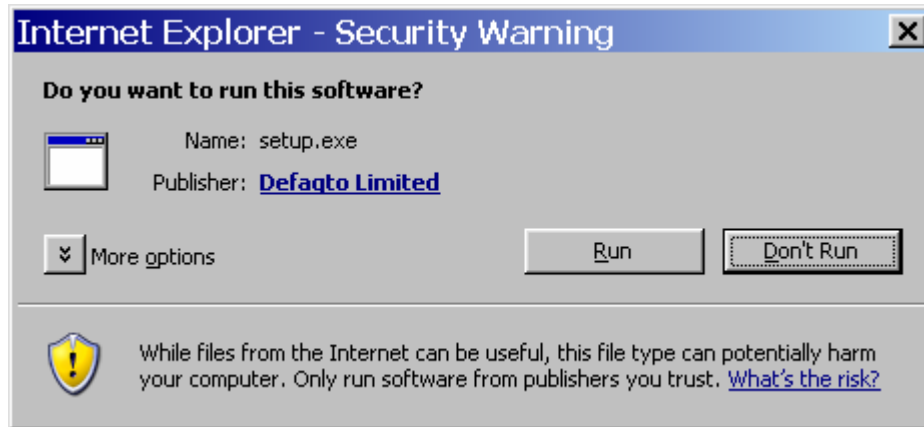
Please use Internet Explorer to perform the update rather than Firefox or an alternative browser.



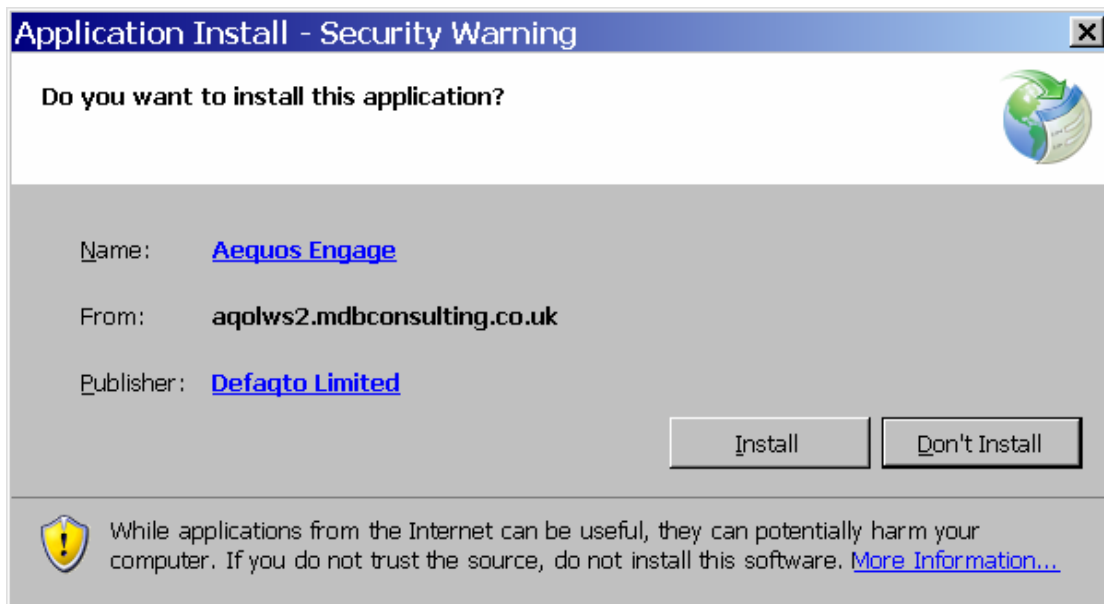
Select the 'Install' button and the following dialog box will appear:



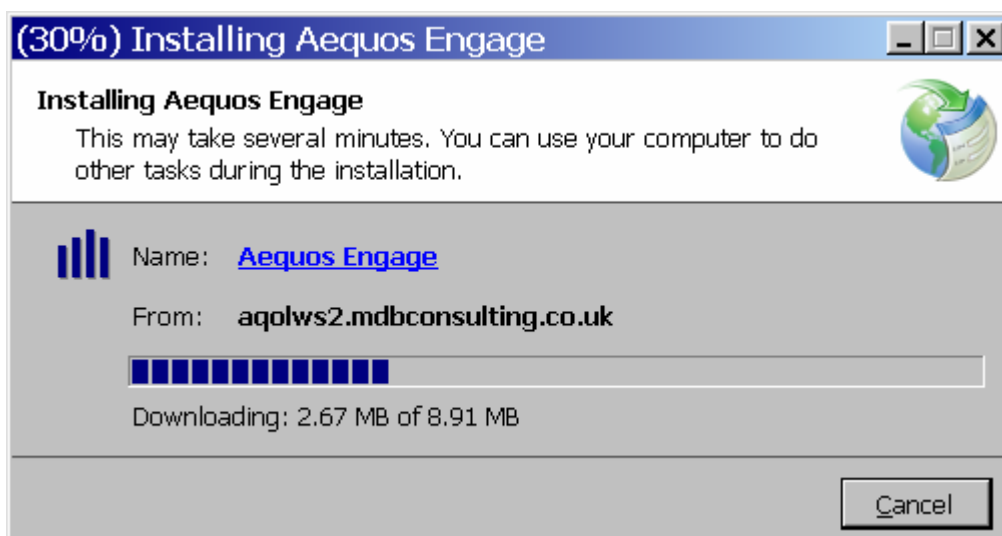
Click 'Run'. You will now see another dialog box.



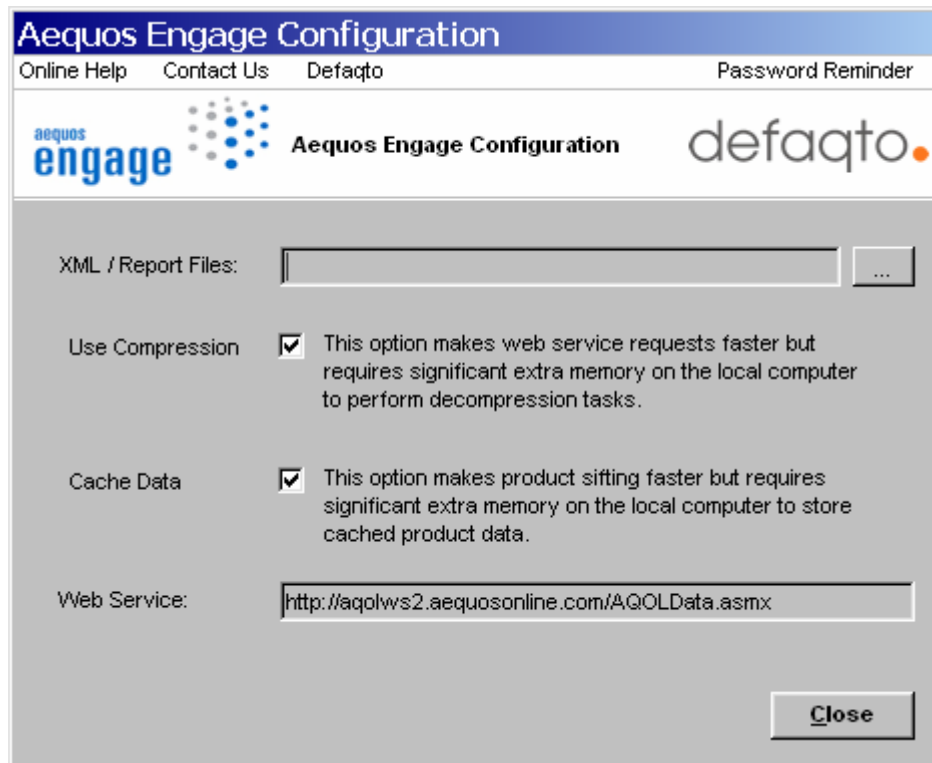
Once again, click 'Run' and the following Install message will appear:



Clicking the 'Install' button will start the install process.



Once Aequos Engage has installed you will be prompted to complete the Aequos Engage Configuration Screen. This is your opportunity to select the location for your saved Reports and also your compression and caching preferences. To choose the Report location click on the button to the right of the XML/Report Files box.



Choose your location and click 'OK'.

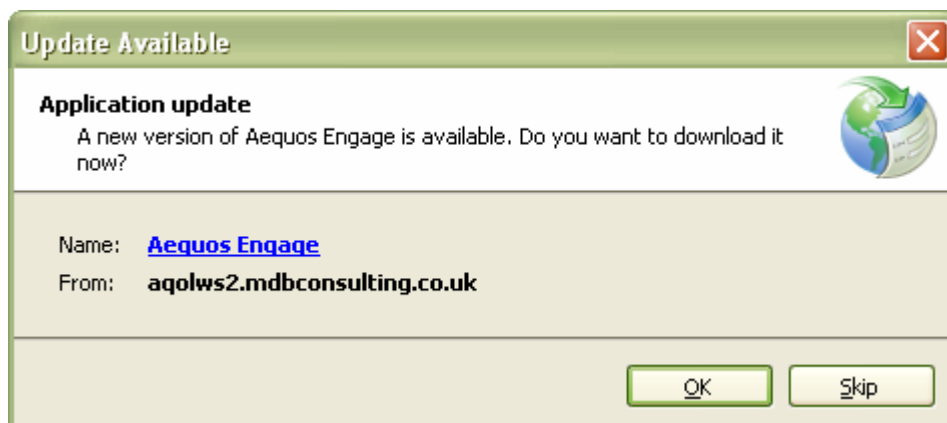


Having chosen your settings, the Engage application should now open and you can access the system as normal.

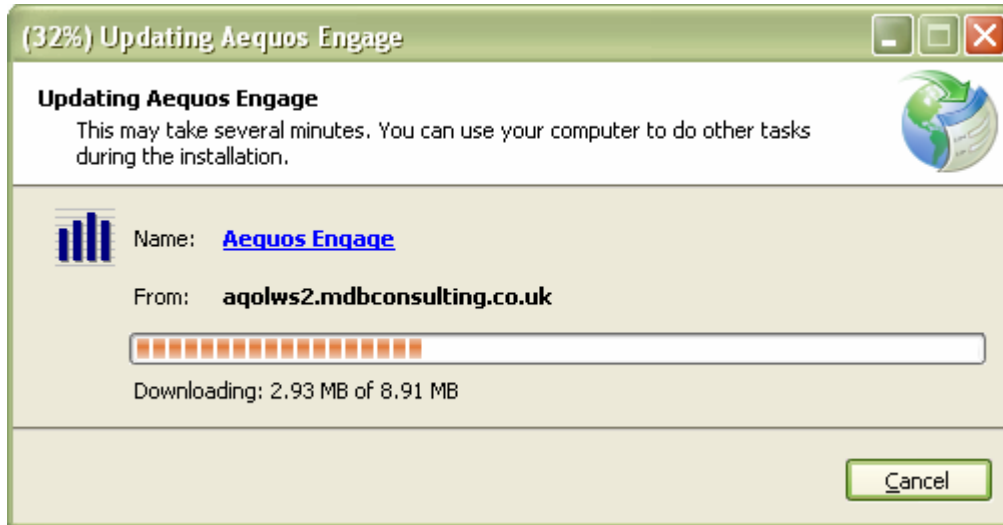
Future Updates

Future updates will be significantly easier to implement as a result of the 2.0.0.0 release.

The next time Defaqto release an Aequos Engage update you will receive a prompt as shown below:



Clicking 'OK' will install the update (see slide below) whereas selecting 'Skip' will allow you to continue working with the existing version until you are ready to update. We do recommend you update at the earliest opportunity as we are regularly introducing new data and functionality which you may not see until an update has been installed.



Once the update has been installed the Aequos Engage application will open automatically allowing you to enter your user name and password and continue with your research.